

Alaska Department of Fish and Game

Habitat Section
Southeast Region



113-51-10040

ADDITION

Water body name:

Quad: Sitka C-4

Upper Reach Latitude: 57.548938 **Longitude:** -135.129876

Lower Reach Latitude: 57.518078 **Longitude:** -135.190683

Survey date: 8/3/2023

Species & Lifestage: COp, Pp

Survey crew: NJ, CD, DK, FC

Findings: We surveyed this cataloged stream using baited minnow traps and GPS and captured juvenile coho salmon, Dolly Varden, cutthroat trout, and rainbow trout. This large stream has cobble, large gravel, and woody debris throughout (Table 1; Figures 1–4).

Recommendations: Extend upper extent of Stream No. 113-51-10040 in the anadromous waters catalog up to waypoint 436, add rearing coho salmon to species, and correct the stream course to mean low tide (Figures 5, 6).

Nomination: Pending

Table 1.—113-51-10040 survey data.

Waypoint	Latitude	Longitude	Notes	Stream Width ft	Stream Substrate	Habitat Features	Gradient %	Sample Effort	Sample Results
433	57.546976	-135.111528	Upstream of culvert.		Cobble	Spawning	6-8	MT	
					Large Gravel	Substrate			
434	57.547109	-135.111505	Slow/pooled water at outlet, then turns into cobble. No blockage or debris seen in culvert.		Small Gravel	Spawning	1-2	MT	8 CT
					Sand	Substrate			3 DV
435	57.548971	-135.129651	3 culverts; all 3 have no substrate in culverts. Fastest moving water at inlet runs through river right culvert. Large cobble evident throughout inlet area and upstream. Return to electrofish upstream.		Cobble		1-2	MT	4 DV
					Large Gravel				
436	57.548905	-135.129895	3 culvert outlets. River right is perched ~10 in, river left is least perched. Large pool closest to middle and river right culvert. About 10 Fish ~100 mm seen swimming in pool.	25-30	Sand	Large	1-2	MT	7 CO
					Cobble	Pool			6 DV
									10 RT
440	57.546841	-135.153022	Large woody debris in/across stream both upstream and downstream. Pics of both up and downstream taken.	30-40	Large Gravel	LWD	1-2	MT	2 CO
					Cobble				24 DV
									7 RT



Figure 1.—Juvenile coho salmon captured at waypoint 436.



Figure 2.—Outlets of the triple culvert bank waypoint 436.



Figure 3.—Substrate impounded upstream of culvert inlets at waypoint 435.



Figure 4.—Substrate upstream at waypoint 435.

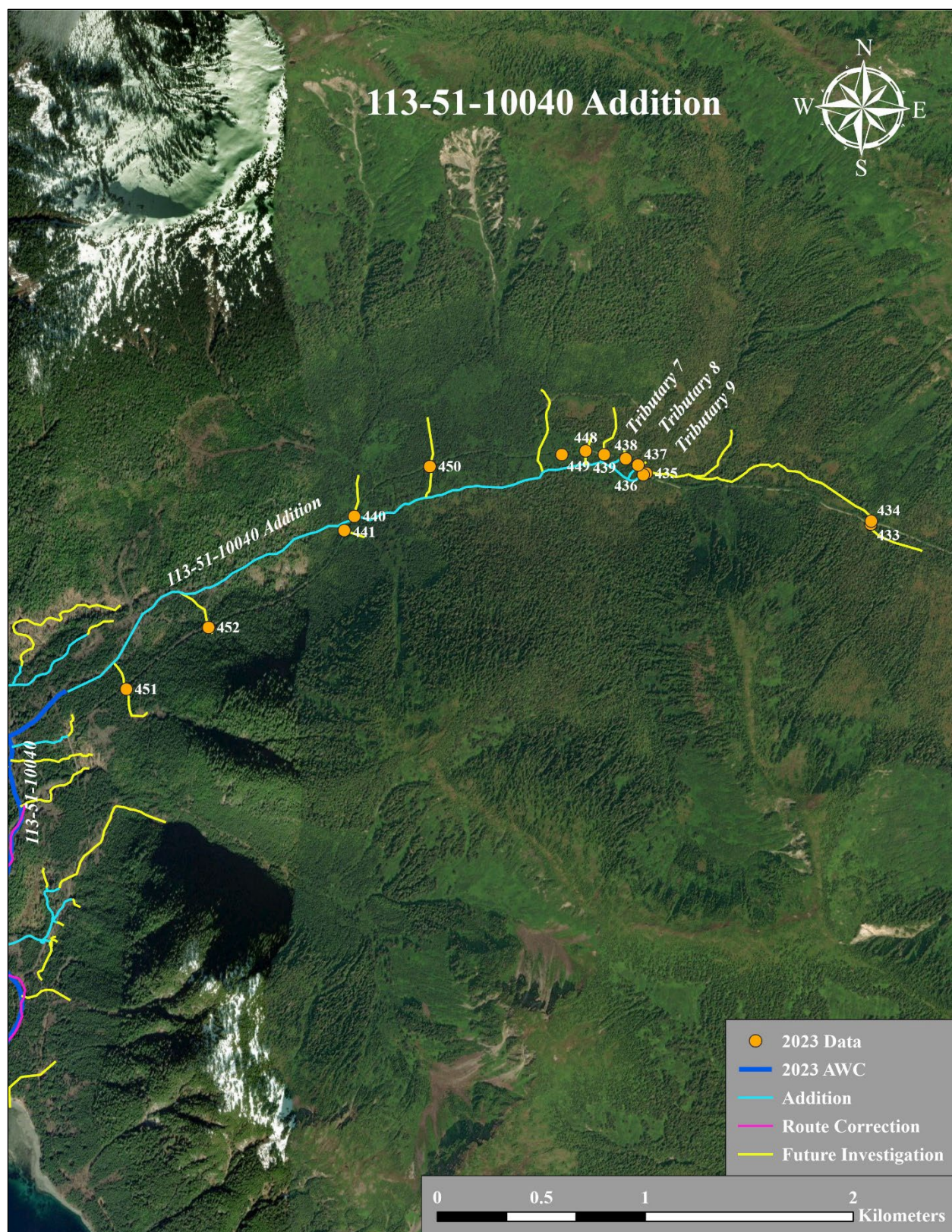


Figure 5.—Stream No. 113-51-10040 addition map.

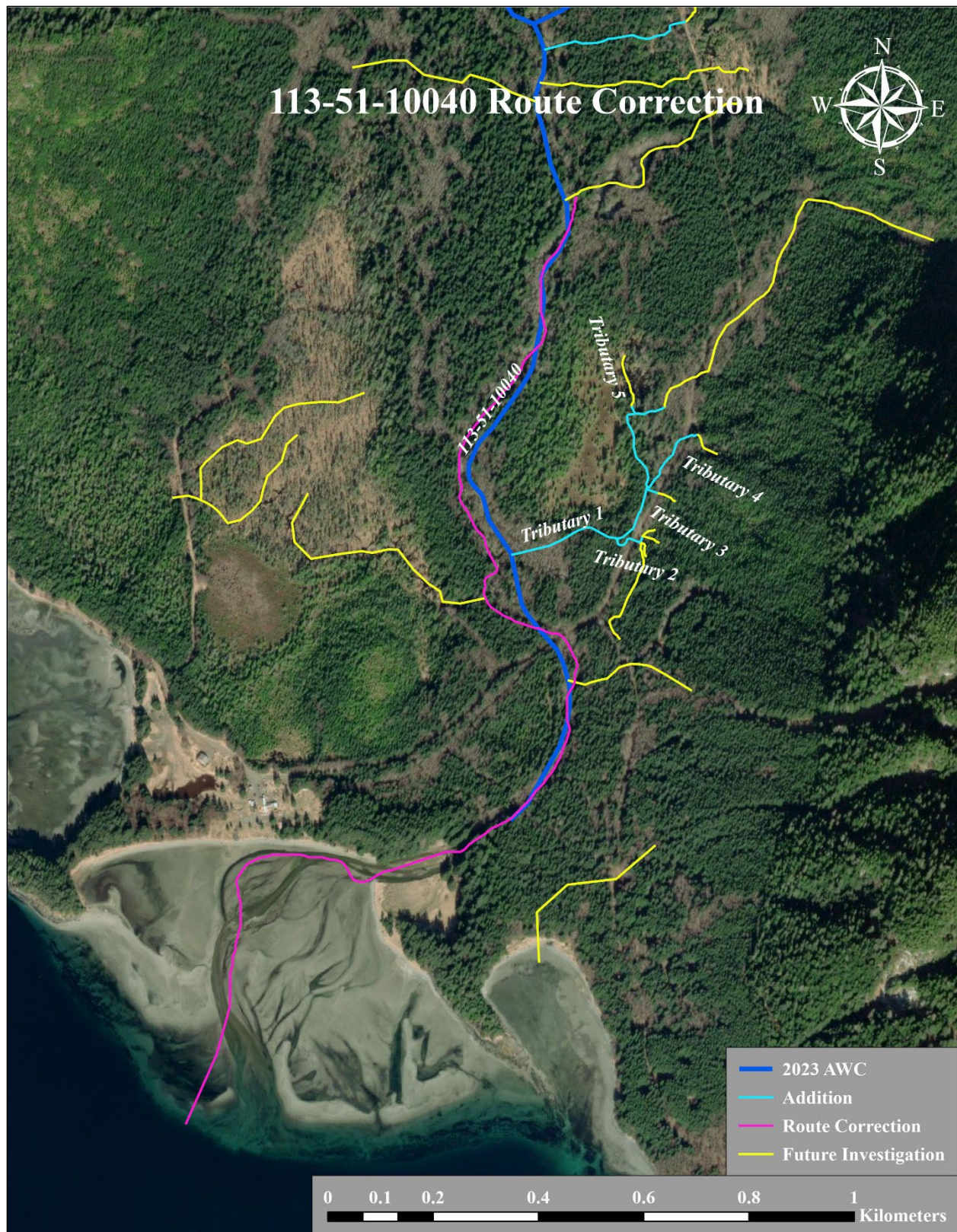


Figure 6. Stream No. 113-51-10040 route correction map.